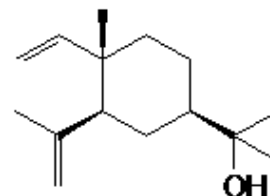


SPECIFICATION SHEET

VERSION 1 VERSION DATE 26/02/19 PRINT DATE 30/05/20

PRODUCT IUPAC NAME ELEMOL (EX-ELEMI)
ELEMOL

PLANT OF ORIGIN Canarium commune/Elemi gum
PART OF THE PLANT RECTIFICATION OF ELEMI OIL
FORMULA C₁₅ H₂₆ O
MOLECULAR WEIGHT 222
CAS 97675-63-3
EINECS 307-636-0
FEMA 2408
CoE 104n
TARIFF NUMBER 3301294100
REACH REGISTRATION NO. Exempt from registration
(imported/manufactured < 1 ton/year)



SPECIFICATIONS

ASPECT AT 20° C MOBILE LIQUID / SOLID
COLOUR YELLOW/ORANGE
ODOUR SPICY, CITRIUS, WOODY, RESINOUS
DENSITY A 20° C (g / ml) 0,95 - 0,975
REFRACTIVE INDEX nD20 1,495 - 1,505
OPTICAL ROTATION (°) / 15
FLASH POINT (°C) 80
ASSAY (% GC) >50%
ACID VALUE (mg KOH/g) -
SOLUBILITY INSOLUBLE IN WATER
VAPOUR PRESSURE NOT DETERMINED
OTHER SOLUBILITIES SOLUBLE IN ETHANOL

STABILITY AND STORAGE

KEEP IN TIGHTLY CLOSED CONTAINER IN A COOL AND DRY PLACE, PROTECTED FROM LIGHT. WHEN STORED FOR MORE THAN 12 MONTHS, QUALITY SHOULD BE CHECKED BEFORE USE.

WE BELIEVE THE ABOVE INFORMATION TO BE CORRECT BUT WE DO NOT PRESENT IT AS ALL INCLUSIVE AND AS SUCH SHOULD BE USED AS A GUIDE. IT IS THE SOLE RESPONSIBILITY OF THE RECEIVER OF OUR PRODUCT TO COMPLY WITH EXISTING REGULATIONS AND INSTRUCTIONS.

PRODASYNTH SAS

Capital : 1.100.000 Euros · R.C.S.: GRASSE B 349 236 372 00026 TVA FR 03 349 236 372 APE 2053 Z

PI DES BOIS DE GRASSE 4 AV. JOSEPH HONORÉ ISNARD · 06130 GRASSE · FRANCE · Tel: +33 0493090011 · Fax: +33 0422130738 · e-mail: info@prodasynt.com